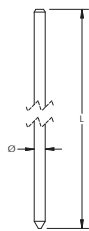


# Ground Rods and Accessories

## COPPER-BONDED GROUND ROD, POINTED



## FEATURES

- 99.9% pure electrolytic copper coating
- Molecular bond to nickel-sealed high strength steel core
- Rods have a high carbon steel core and tip that provide superior strength when driving
- Copper coating will not crack when bent or tear when driven
- Minimum copper coating of 10 mils on rods listed to UL 467
- ERICO name, length, diameter and part number is roll-stamped within 12" (304,8 mm ) of chamfered end
- UL logo and control number where applicable stamped on each rod for easy inspection after installation

Material: Copper-Bonded Steel

Tensile Strength: 552 MPa Min

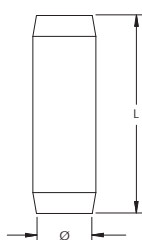


Part Number	Superseded Part Number	Ground Rod Diameter, Nominal	Ground Rod Diameter, Actual	Length	Plating Thickness	Unit Weight	UPC Label	Complies With	Certifications
223613840	155000	3/8"	9,0 mm	1,2 m	254 µm	0,57 kg	No	-	-
223613850	155010	3/8"	9,0 mm	1,5 m	254 µm	0,73 kg	No	-	-
223613860		3/8"	9,0 mm	1,8 m	254 µm	0,90 kg	No	-	-
223613870	155030	3/8"	9,0 mm	2,1 m	254 µm	1,10 kg	No	-	-
223613880	155040	3/8"	9,0 mm	2,4 m	254 µm	1,23 kg	No	-	-
223613800	155050	3/8"	9,0 mm	3,0 m	254 µm	1,60 kg	No	-	-
223611330	-	1/2"	12,7 mm	0,9 m	254 µm	0,98 kg	No	-	-
2236113330	155055	1/2"	12,7 mm	1,0 m	254 µm	1,00 kg	No	-	-
223611340	155060	1/2"	12,7 mm	1,2 m	254 µm	1,26 kg	No	-	-
223611350	155070	1/2"	12,7 mm	1,5 m	254 µm	1,57 kg	No	-	-
223611353	-	1/2"	12,7 mm	1,5 m	330 µm	1,67 kg	No	-	-
223611360	-	1/2"	12,7 mm	1,8 m	254 µm	2,01 kg	No	-	-
223611370	155090	1/2"	12,7 mm	2,1 m	254 µm	2,11 kg	No	ANSI ° /NEMA ° GR1	-
223611380	-	1/2"	12,7 mm	2,4 m	254 µm	2,51 kg	No	ANSI ° /NEMA ° GR1	UL
223611300	155110	1/2"	12,7 mm	3,0 m	254 µm	3,11 kg	No	ANSI ° /NEMA ° GR1	CSA, cULus
223611303	-	1/2"	12,7 mm	3,0 m	330 µm	3,35 kg	No	ANSI ° /NEMA ° GR1	cULus
223615830	-	5/8"	14,2 mm	0,9 m	254 µm	1,13 kg	No	IEC ° EN 62561-2	-
2236158330	155235	5/8"	14,2 mm	1,0 m	254 µm	1,25 kg	No	IEC ° EN 62561-2	-
223615840	155240	5/8"	14,2 mm	1,2 m	254 µm	1,54 kg	No	IEC ° EN 62561-2	-
223615843	-	5/8"	14,2 mm	1,2 m	330 µm	1,54 kg	No	IEC ° EN 62561-2	-
223615850	155250	5/8"	14,2 mm	1,5 m	254 µm	1,92 kg	No	IEC ° EN 62561-2	-
223615853	-	5/8"	14,2 mm	1,5 m	330 µm	2,04 kg	No	IEC ° EN 62561-2	-
223615860	-	5/8"	14,2 mm	1,8 m	254 µm	2,30 kg	No	IEC ° EN 62561-2	-
223615863	-	5/8"	14,2 mm	1,8 m	330 µm	2,45 kg	No	IEC ° EN 62561-2	-
2236158660	155265	5/8"	14,2 mm	2,0 m	254 µm	2,53 kg	No	IEC ° EN 62561-2, ANSI ° /NEMA ° GR1	-
223615870	155270	5/8"	14,2 mm	2,1 m	254 µm	2,66 kg	No	IEC ° EN 62561-2, ANSI ° /NEMA ° GR1	-
223615880	-	5/8"	14,2 mm	2,4 m	254 µm	3,07 kg	No	IEC ° EN 62561-2, ANSI ° /NEMA ° GR1	UL
223615883	-	5/8"	14,2 mm	2,4 m	330 µm	3,08 kg	No	IEC ° EN 62561-2, ANSI ° /NEMA ° GR1	UL
223615800	155290	5/8"	14,2 mm	3,0 m	254 µm	3,85 kg	No	IEC ° EN 62561-2, ANSI ° /NEMA ° GR1	CSA, cULus
223615803	-	5/8"	14,2 mm	3,0 m	330 µm	3,83 kg	No	IEC ° EN 62561-2, ANSI ° /NEMA ° GR1	cULus
223615812	-	5/8"	14,2 mm	3,7 m	254 µm	4,54 kg	No	IEC ° EN 62561-2, ANSI ° /NEMA ° GR1	cULus
223615815	-	5/8"	14,2 mm	4,6 m	254 µm	5,78 kg	No	IEC ° EN 62561-2, ANSI ° /NEMA ° GR1	cULus

Part Number	Superceded Part Number	Ground Rod Diameter, Nominal	Ground Rod Diameter, Actual	Length	Plating Thickness	Unit Weight	UPC Label	Complies With	Certifications
223615950	-	5/8"	16,0 mm	1,5 m	254 µm	2,35 kg	No	-	-
223615980	-	5/8"	16,0 mm	2,4 m	254 µm	3,87 kg	No	IEC * EN 62561-2, ANSI * /NEMA * GR1	UL
223615900	-	5/8"	16,0 mm	3,0 m	254 µm	4,76 kg	No	IEC * EN 62561-2, ANSI * /NEMA * GR1	cULus
223613440	155420	3/4"	17,3 mm	1,2 m	254 µm	2,55 kg	No	IEC * EN 62561-2	-
223613450	155430	3/4"	17,3 mm	1,5 m	254 µm	2,81 kg	No	IEC * EN 62561-2	-
223613460	155440	3/4"	17,3 mm	1,8 m	254 µm	3,40 kg	No	IEC * EN 62561-2	-
223613470	155450	3/4"	17,3 mm	2,1 m	254 µm	3,85 kg	No	IEC * EN 62561-2, ANSI * /NEMA * GR1	-
223613480	155460	3/4"	17,3 mm	2,4 m	254 µm	4,56 kg	No	IEC * EN 62561-2, ANSI * /NEMA * GR1	UL
223613483	-	3/4"	17,3 mm	2,4 m	330 µm	4,54 kg	No	IEC * EN 62561-2, ANSI * /NEMA * GR1	UL
223613400	155470	3/4"	17,3 mm	3,0 m	254 µm	5,72 kg	No	IEC * EN 62561-2, ANSI * /NEMA * GR1	CSA, cULus
223613403	-	3/4"	17,3 mm	3,0 m	330 µm	5,63 kg	No	IEC * EN 62561-2, ANSI * /NEMA * GR1	cULus
223613412	-	3/4"	17,3 mm	3,7 m	254 µm	6,77 kg	No	IEC * EN 62561-2, ANSI * /NEMA * GR1	cULus
223613415	-	3/4"	17,3 mm	4,6 m	254 µm	8,39 kg	No	IEC * EN 62561-2, ANSI * /NEMA * GR1	cULus
223693400	-	3/4"	19,1 mm	3,0 m	254 µm	5,60 kg	No	IEC * EN 62561-2, ANSI * /NEMA * GR1	cULus
223693450	-	3/4"	19,1 mm	1,5 m	254 µm	2,80 kg	No	-	-
223693480	-	3/4"	19,1 mm	2,4 m	254 µm	4,56 kg	No	IEC * EN 62561-2, ANSI * /NEMA * GR1	UL
223614400	-	1"	23,2 mm	3,0 m	254 µm	10,00 kg	No	ANSI * /NEMA * GR1	CSA, cULus

For rods to be listed to UL \* 467, they must be at least 8' (2.43 m) in length. IEC \* EN 62561-2 supercedes EN 50164-2. Additional lengths available.

## COMPRESSION COUPLER FOR COPPER-BONDED GROUND ROD, POINTED



### FEATURES

- Threadless compression coupler for use with pointed copper-bonded ground rods
- Inside of coupler is tapered so ground rod compresses during installation to form an irreversible conductive connection



Part Number	Article Number	Ground Rod Diameter, Nominal	Length	Unit Weight	Complies With	Certifications
Material: Brass						
223156650		1/2"	70.0 mm	0.13 kg		
Material: Silicon Bronze						
223CC12F	158000	1/2"	69.8 mm	0.13 kg		CSA, cULus
223CC58	158010	5/8"	69.8 mm	0.15 kg	IEC * EN 62561-2	CSA, cULus
223CC34	158020	3/4"	69.8 mm	0.20 kg	IEC * EN 62561-2	CSA, cULus

IEC \* EN 62561-2 supercedes EN 50164-2.

## COPPER-BONDED GROUND ROD, SECTIONAL



### FEATURES

- Cold-rolled threads with continuous, unbroken grain flows preserve copper coating and are stronger than cut threads
- 99.9% pure electrolytic copper coating
- Molecular bond to nickel-sealed high strength steel core
- Rods have a high carbon steel core and tip that provide superior strength when driving
- Copper coating will not crack when bent or tear when driven
- Minimum copper coating of 10 mils on rods listed to UL <sup>®</sup> 467
- ERICO name, length, diameter and part number is roll-stamped within 12" (304,8 mm ) of chamfered end
- UL logo and control number where applicable stamped on each rod for easy inspection after installation

Material: Copper-Bonded Steel  
Tensile Strength: 552 MPa Min

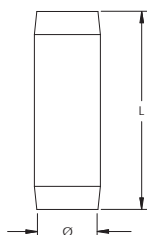


Part Number	Superseded Part Number	Ground Rod Diameter, Nominal	Ground Rod Diameter, Actual	Thread Size	Length	Plating Thickness	Unit Weight	Complies With	Certifications
Thread Location: Chamfered (Non-Pointed) End Only									
223625850		5/8"	14,2 mm	5/8 UNC	1,500 mm	254 µm	1,9 kg	IEC <sup>®</sup> EN 62561-2	
Thread Location: Pointed and Chamfered Ends									
223631340	-	1/2"	12,8 mm	9/16 UNC	1,2 m	254 µm	1,2 kg	-	-
223631350	-	1/2"	12,8 mm	9/16 UNC	1,5 m	254 µm	1,6 kg	-	-
223631360	-	1/2"	12,8 mm	9/16 UNC	1,8 m	254 µm	1,9 kg	-	-
223631380	-	1/2"	12,8 mm	9/16 UNC	2,4 m	254 µm	2,4 kg	ANSI <sup>®</sup> /NEMA <sup>®</sup> GR1	UL
223631300	-	1/2"	12,8 mm	9/16 UNC	3,0 m	254 µm	3,1 kg	ANSI <sup>®</sup> /NEMA <sup>®</sup> GR1	CSA, cULus
223631303	-	1/2"	12,8 mm	9/16 UNC	3,0 m	330 µm	3,2 kg	ANSI <sup>®</sup> /NEMA <sup>®</sup> GR1	cULus
223635830	-	5/8"	14,2 mm	5/8 UNC	0,9 m	254 µm	1,2 kg	IEC <sup>®</sup> EN 62561-2	-
223635843	-	5/8"	14,2 mm	5/8 UNC	1,2 m	330 µm	1,5 kg	IEC <sup>®</sup> EN 62561-2	-
223635840	155300	5/8"	14,2 mm	5/8 UNC	1,2 m	254 µm	1,5 kg	IEC <sup>®</sup> EN 62561-2	-
223635850	155310	5/8"	14,2 mm	5/8 UNC	1,5 m	254 µm	1,9 kg	IEC <sup>®</sup> EN 62561-2	-
223635860	155320	5/8"	14,2 mm	5/8 UNC	1,8 m	254 µm	2,3 kg	IEC <sup>®</sup> EN 62561-2	-
2236358660	158700	5/8"	14,2 mm	5/8 UNC	2,0 m	254 µm	2,5 kg	IEC <sup>®</sup> EN 62561-2	-
223635870	155330	5/8"	14,2 mm	5/8 UNC	2,1 m	254 µm	2,9 kg	IEC <sup>®</sup> EN 62561-2	-
223635880	155340	5/8"	14,2 mm	5/8 UNC	2,4 m	254 µm	3,0 kg	ANSI <sup>®</sup> /NEMA <sup>®</sup> GR1, IEC <sup>®</sup> EN 62561-2	UL
223635883	-	5/8"	14,2 mm	5/8 UNC	2,4 m	330 µm	3,0 kg	ANSI <sup>®</sup> /NEMA <sup>®</sup> GR1, IEC <sup>®</sup> EN 62561-2	UL
223635800	155350	5/8"	14,2 mm	5/8 UNC	3,0 m	254 µm	3,8 kg	ANSI <sup>®</sup> /NEMA <sup>®</sup> GR1, IEC <sup>®</sup> EN 62561-2	CSA, cULus
223635803	-	5/8"	14,2 mm	5/8 UNC	3,0 m	330 µm	3,9 kg	ANSI <sup>®</sup> /NEMA <sup>®</sup> GR1, IEC <sup>®</sup> EN 62561-2	cULus
223633430		3/4"	17,3 mm	3/4 UNC	0,9 m	254 µm	1,7 kg	IEC <sup>®</sup> EN 62561-2	-
2236334330	155725	3/4"	17,3 mm	3/4 UNC	1,00 m	254 µm	1,8 kg	IEC <sup>®</sup> EN 62561-2	-
223633440	155480	3/4"	17,3 mm	3/4 UNC	1,2 m	254 µm	2,2 kg	IEC <sup>®</sup> EN 62561-2	-
223633450	155490	3/4"	17,3 mm	3/4 UNC	1,5 m	254 µm	2,8 kg	IEC <sup>®</sup> EN 62561-2	-
223633460	155500	3/4"	17,3 mm	3/4 UNC	1,8 m	254 µm	3,2 kg	IEC <sup>®</sup> EN 62561-2	-
223633463		3/4"	17,3 mm	3/4 UNC	1,8 m	330 µm	3,2 kg	IEC <sup>®</sup> EN 62561-2	-
223633470	155510	3/4"	17,3 mm	3/4 UNC	2,1 m	254 µm	3,9 kg	IEC <sup>®</sup> EN 62561-2	-
223633480	155520	3/4"	17,3 mm	3/4 UNC	2,4 m	254 µm	4,4 kg	ANSI <sup>®</sup> /NEMA <sup>®</sup> GR1, IEC <sup>®</sup> EN 62561-2	UL
223633400	155530	3/4"	17,3 mm	3/4 UNC	3,0 m	254 µm	5,7 kg	ANSI <sup>®</sup> /NEMA <sup>®</sup> GR1, IEC <sup>®</sup> EN 62561-2	CSA, cULus

Part Number	Superseded Part Number	Ground Rod Diameter, Nominal	Ground Rod Diameter, Actual	Thread Size	Length	Plating Thickness	Unit Weight	Complies With	Certifications
223633403	-	3/4"	17,3 mm	3/4 UNC	3,0 m	330 µm	5,7 kg	ANSI <sup>®</sup> /NEMA <sup>®</sup> GR1, IEC <sup>®</sup> EN 62561-2	cULus
223633415	-	3/4"	17,3 mm	3/4 UNC	4,6 m	254 µm	8,5 kg	ANSI <sup>®</sup> /NEMA <sup>®</sup> GR1, IEC <sup>®</sup> EN 62561-2	cULus
223634400	-	1"	23,2 mm	1 UNC	3,0 m	254 µm	10,0 kg	ANSI <sup>®</sup> /NEMA <sup>®</sup> GR1	CSA, cULus

For rods to be listed to UL<sup>®</sup> 467, they must be at least 8' (2.43 m) in length. IEC<sup>®</sup> EN 62561-2 supercedes EN 50164-2.

### THREADED COUPLER FOR COPPER-BONDED GROUND ROD, SECTIONAL



#### FEATURES

- High-strength couplings are threaded and chamfered at both ends for easy driving
- Corrosion-resistant couplings ensure permanent, low resistance copper-to-copper connections



Part Number	Article Number	Ground Rod Diameter, Nominal	Length	Thread Size	Unit Weight	Certifications
Material: Bronze						
223CR12S		9/16"	63.5 mm	9/16 UNC	0.07 kg	CSA, cULus
223CR58	158040	5/8"	61.0 mm	5/8 UNC	0.10 kg	CSA, cULus
223SC34	158050	3/4"	71.0 mm	3/4 UNC	0.17 kg	
223CR34		3/4"	76.2 mm	3/4 UNC	0.15 kg	CSA, cULus
Material: Silicon Bronze						
223CR100		1"	99.1 mm	1 UNC	0.35 kg	cULus

### CONVENIENT GROUND ELECTRODE KIT



#### FEATURES

- Kit includes two ground rods, ground clamp, compression coupler and drive sleeve
- UL<sup>®</sup> -Listed and NEC<sup>®</sup> -Compliant
- Allows for installation from ground level
- Two 4' (1.2 m) ground rods with coupler provide more convenient storage and transportation than one 8' (2.4 m) ground rod



Part Number	ERICO Ground Rods	Clamp	ERICO HAMMERLOCK	ERICO Drive Sleeve	Conductor Size
Material: Copper-Bonded Steel, Bronze					
223CGE5CP	615840	223CP58		223EDS58	#8 Solid - #2 Stranded, 10 mm <sup>2</sup> Solid - 35 mm <sup>2</sup> Stranded
Material: Copper-Bonded Steel, Copper					
223CGE51K	615840		223EHL58C1K	223EDS58	#4 Solid - #6 Solid, 10 mm <sup>2</sup> Stranded - 16 mm <sup>2</sup> Stranded

## PORTABLE GROUND ROD KIT



### FEATURES

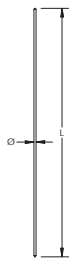
- Segmented portable ground rod kit specified by the United States military
- Each of the three ground rod sections is 3' (0.91 m) long, thus creating a total depth of 9' (2.74 m) of earth grounding
- All accessories are provided in the kit to assemble the portable ground
- 6' (1.83 m) of copper grounding cable connected to the rod, makes for an easy connection to a vehicle or other item requiring a ground

### Part Number

223635837

Kit Includes: 3 threaded copper-bonded ground rods - 5/8" x 3" (190.5 mm x 0.91 m), 3 threaded couplers, 1 drive stud, 1 heavy duty ground rod clamp, Tang and collar lugs, and 6' (1.83 m) of #6 copper wire.

## GALVANIZED GROUND ROD, POINTED



### FEATURES

- Meets ANSI <sup>®</sup>/NEMA <sup>®</sup> GR1
- Zinc-coated exteriors are hot-dip galvanized for solid protection against corrosion, in accordance with ASTM <sup>®</sup> specification A153-78
- Surfaces are rigidly inspected to eliminate seams, slivers and other defects

Material: Steel

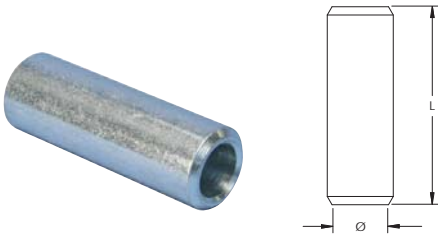
Finish: Hot-Dip Galvanized

Tensile Strength: 552 MPa Min



Part Number	Ground Rod Diameter, Nominal	Ground Rod Diameter, Actual	Length	Unit Weight	UPC Label	Certifications
223811350	1/2"	13.0 mm	1,500 mm	1.5 kg	No	
223811360	1/2"	13.0 mm	1,800 mm	1.8 kg	No	
223811380	1/2"	13.0 mm	2,400 mm	2.4 kg	No	
223815840	5/8"	16.0 mm	1,200 mm	1.9 kg	No	
223815850	5/8"	16.0 mm	1,500 mm	2.4 kg	No	
223815860	5/8"	16.0 mm	1,800 mm	2.9 kg	No	
223815880	5/8"	16.0 mm	2,400 mm	3.8 kg	No	
223815800	5/8"	16.0 mm	3,000 mm	4.8 kg	No	CSA
223813480	3/4"	18.5 mm	2,400 mm	5.1 kg	No	
223813400	3/4"	18.5 mm	3,000 mm	6.3 kg	No	CSA
223814400	1"	25.7 mm	3,000 mm	12.3 kg	No	CSA

## COMPRESSION COUPLER FOR GALVANIZED GROUND ROD, POINTED



### FEATURES

- Threadless compression coupler for use with galvanized steel ground rods
- Inside of coupler is tapered so ground rod compresses during installation to form an irreversible conductive connection

Material: Steel

Finish: Electrogalvanized

Part Number	Ground Rod Diameter, Nominal	Length	Unit Weight
223GCC58F	5/8"	76.2 mm	0.14 kg
223GCC34	3/4"	89.9 mm	0.16 kg

## STAINLESS STEEL GROUND ROD, POINTED



### FEATURES

- For use in highly-corrosive soils

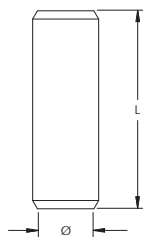
Material: Stainless Steel 304 (EN 1.4301)

Tensile Strength: 586 MPa Min



Part Number	Ground Rod Diameter, Nominal	Ground Rod Diameter, Actual	Length	Unit Weight	UPC Label	Certifications
223681300	1/2"	12.7 mm	3,000 mm	3.0 kg	No	
223685880	5/8"	15.9 mm	2,400 mm	3.8 kg	No	UL
223685800	5/8"	15.9 mm	3,000 mm	4.7 kg	No	cULus
223683450	3/4"	19.1 mm	1,500 mm	3.1 kg	No	
223683480	3/4"	19.1 mm	2,400 mm	4.6 kg	No	UL
223683400	3/4"	19.1 mm	3,000 mm	6.8 kg	No	cULus
223683412	3/4"	19.1 mm	3,700 mm	8.6 kg	No	
223684400	1"	25.4 mm	3,000 mm	12.1 kg	No	
223684415	1"	25.4 mm	4,600 mm	13.6 kg	No	

## COMPRESSION COUPLER FOR STAINLESS STEEL GROUND ROD, POINTED



### FEATURES

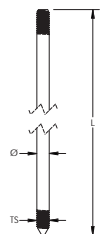
- Threadless compression coupler for use with pointed stainless steel ground rods in corrosive soils
- Inside of coupler is tapered so ground rod compresses during installation to form an irreversible conductive connection

Material: Stainless Steel 304 (EN 1.4301 )



Part Number	Ground Rod Diameter, Nominal	Length	Unit Weight	Certifications
223CC58SS	5/8"	76.2 mm	0.11 kg	cULus
223CC34SS	3/4"	82.6 mm	0.15 kg	cULus
223CCSS14	14 mm	70.0 mm	0.05 kg	

## STAINLESS STEEL GROUND ROD, THREADED



### FEATURES

- Utilizes a cut thread for highly corrosive soil

Material: Stainless Steel 302 (EN 1.4324 ), Stainless Steel 304 (EN 1.4301 )

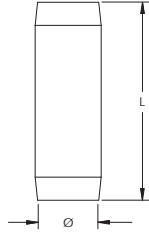
Tensile Strength: 483 MPa Min



Part Number	Ground Rod Diameter, Nominal	Ground Rod Diameter, Actual	Thread Size	Length	Unit Weight	Certifications
223681300S	1/2"	12.7 mm	1/2 UNC	3,000 mm	3.0 kg	
223683400S	3/4"	19.1 mm	3/4 UNC	3,000 mm	6.8 kg	cULus
223683450S	3/4"	19.1 mm	3/4 UNC	1,500 mm	3.1 kg	
223684400S	1"	25.4 mm	1 UNC	3,000 mm	12.1 kg	
223685800S	5/8"	16.0 mm	5/8 UNC	3,000 mm	4.7 kg	cULus
223685880S	5/8"	16.0 mm	5/8 UNC	2,400 mm	3.5 kg	UL



## THREADED COUPLER FOR STAINLESS STEEL GROUND ROD, THREADED



### FEATURES

- Corrosion-resistant couplings ensure permanent, low-resistance connections between ground rods

Material: Stainless Steel 304 (EN 1.4301)



Part Number	Ground Rod Diameter, Nominal	Length	Thread Size	Unit Weight	Certifications
223CR58CE	5/8"	69.9 mm	5/8 UNC	0.12 kg	
223CR58SS	5/8"	77.7 mm	5/8 UNC	0.12 kg	cULus
223CR34SS	3/4"	77.8 mm	3/4 UNC	0.18 kg	cULus

## STAINLESS STEEL GROUND ROD, EXTENSIBLE



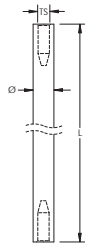
### FEATURES

- Extensible rod does not require a coupler in order to extend the length of the ground rod

Material: Stainless Steel 316 (EN 1.4401)  
Tensile Strength: 483 MPa Min

Part Number	Ground Rod Diameter, Actual	Length	Unit Weight
22315SS20	20 mm	1,500 mm	3.7 kg

## STAINLESS STEEL GROUND ROD, THREADED INTERNAL THREAD



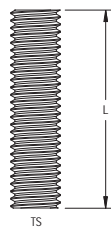
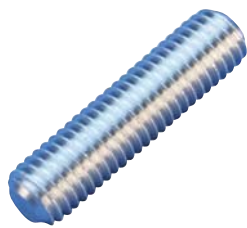
### FEATURES

- Stainless steel threaded ground rod with internal threading

Material: Stainless Steel 316 (EN 1.4401)  
Tensile Strength: 483 MPa Min

Part Number	Ground Rod Diameter, Actual	Thread Size	Length	Unit Weight
223SSR16	16 mm	M10	1,200 mm	1.8 kg

## THREADED COUPLER FOR STAINLESS STEEL GROUND ROD, INTERNAL THREAD



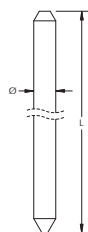
### FEATURES

- For use with SSR16 stainless steel ground rod, internal thread

Material: Stainless Steel 304 (EN 1.4301 )

Part Number	Article Number	Length	Thread Size	Unit Weight
223SSD10	710115	40 mm	M10	0.02 kg

## SOLID COPPER GROUND ROD, POINTED



### FEATURES

- Solid copper ground rods made of high conductive hard drawn bare copper

Material: Copper

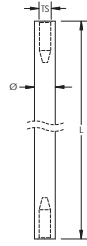
Tensile Strength: 290 MPa Min



Part Number	Ground Rod Diameter, Nominal	Ground Rod Diameter, Actual	Length	Unit Weight	Certifications
223LPC700	1/2"	12.7 mm	2,440 mm	2.76 kg	UL
223LPC702	1/2"	12.7 mm	3,050 mm	3.44 kg	cULus
223LPC704	5/8"	15.9 mm	2,440 mm	4.29 kg	UL
223LPC706	5/8"	15.9 mm	3,050 mm	5.35 kg	cULus
223LPC711	3/4"	19.1 mm	3,050 mm	7.70 kg	cULus

Due to the inherent softness of the copper material, special consideration should be given when driving this product into the soil.

## SOLID COPPER GROUND ROD, INTERNAL THREAD



### FEATURES

- Solid copper sectional ground rod with internal threading

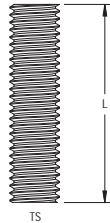
Material: Copper

Tensile Strength: 50 MPa

Part Number	Ground Rod Diameter, Actual	Thread Size	Length	Unit Weight
223SCR15	15 mm	M10	1,200 mm	1.64 kg
223SCR20	20 mm	M10	1,200 mm	3.34 kg

Due to the inherent softness of the copper material, special consideration should be given when driving this product into the soil.

## THREADED COUPLER FOR SOLID COPPER GROUND ROD, INTERNAL THREAD



### FEATURES

- Internal coupling for SCR15 and SCR20 copper ground rods

Material: Phosphor Bronze

Part Number	Article Number	Length	Thread Size	Unit Weight
223PBD10	710110	32 mm	M10	0.02 kg

## CHEMICAL GROUND ELECTRODE



Chemical ground electrodes provide a low impedance ground in locations of high soil resistivity and dry soil conditions. Used in conjunction with a bentonite backfill and nVent ERICO's unique GEM material, the nVent ERICO chemical ground rod electrode systems provide a method to improve soil resistivity directly surrounding the electrode, and can replace multiple conventional ground rods. It maintains a low ground resistance, maintenance-free installation that dissipates lightning energy and other dangerous electrical fault currents, even in sandy or rocky soil conditions.

## FEATURES

- Contains natural electrolytic salts, which permeate into the surrounding soil to condition the soil and increase its conductivity
- Easy connection to ground electrode conductor using the factory provided pigtail (up or down orientation)
- Provides decades of reliable services due to rugged construction and high-quality metals with a 30-year minimum service life
- 2-1/8" (54 mm) outside diameter copper pipe with 0.083" (2.1 mm) wall
- Available in continuous sections up to 10' (3.05 m) in length; longer rods can be field assembled using 5' (1.52 m) or 10' (3.05 m) extensions
- Optional factory-attached radial strips are available to reduce impedance to high-frequency lightning energy and to control the direction of the dissipation
- L-shaped rods are available for horizontal installation applications where it is impractical to auger deep vertical holes
- Access segment on horizontal (L-shaped) chemical ground electrodes is 32" (813 mm) deep

Material: Copper



Part Number	Electrode Length	Pigtail Length	Depth	Conductor Size	Kit
Installation: Horizontal with Pigtail Down					
223ECRH081T4D	2.4 m	1.2 m	813 mm	#2 Solid	Yes
223ECRH101T3D	3.1 m	0.9 m	813 mm	#2 Solid	Yes
223ECRH101T4DB	3.1 m	1.2 m	813 mm	#2 Solid	No
223ECRH101T4D	3.1 m	1.2 m	813 mm	#2 Solid	Yes
223ECRH101V4D	3.1 m	1.2 m	813 mm	#2 Stranded	Yes
223ECRH102C4D	3.1 m	1.2 m	813 mm	1/0 Stranded	Yes
223ECRH102G4DB	3.1 m	1.2 m	813 mm	2/0 Stranded	No
223ECRH102G4D	3.1 m	1.2 m	813 mm	2/0 Stranded	Yes
223ECRH102Q4DB	3.1 m	1.2 m	813 mm	4/0 Stranded	No
223ECRH102Q4D	3.1 m	1.2 m	813 mm	4/0 Stranded	Yes
223ECRH102V4D	3.1 m	1.2 m	813 mm	250 kcmil Stranded	Yes
223ECRH103Q4D	3.1 m	1.2 m	813 mm	500 kcmil Stranded	Yes
223ECRH102G5D	3.1 m	1.5 m	813 mm	2/0 Stranded	Yes
223ECRH102Q6DB	3.1 m	1.8 m	813 mm	4/0 Stranded	No
223ECRH102G10D	3.1 m	3.1 m	813 mm	2/0 Stranded	Yes
223ECRH102Q10D	3.1 m	3.1 m	813 mm	4/0 Stranded	Yes
223ECRH122C4D	3.7 m	1.2 m	813 mm	1/0 Stranded	Yes
223ECRH122G4D	3.7 m	1.2 m	813 mm	2/0 Stranded	Yes
223ECRH122Q4DB	3.7 m	1.2 m	813 mm	4/0 Stranded	No
223ECRH122Q4D	3.7 m	1.2 m	813 mm	4/0 Stranded	Yes
223ECRHE152Q4D	4.6 m	1.2 m	813 mm	4/0 Stranded	Yes
223ECRHE201T4D	6.1 m	1.2 m	813 mm	#2 Solid	Yes
223ECRHE202G4D	6.1 m	1.2 m	813 mm	2/0 Stranded	Yes
223ECRHE202Q4D	6.1 m	1.2 m	813 mm	4/0 Stranded	Yes
223ECRHE203D4D	6.1 m	1.2 m	813 mm	350 kcmil Stranded	Yes
Installation: Horizontal with Pigtail Up					
223ECRH081T4UB	2.4 m	1.2 m	813 mm	#2 Solid	No
223ECRH081T4U	2.4 m	1.2 m	813 mm	#2 Solid	Yes
223ECRH082C4U	2.4 m	1.2 m	813 mm	1/0 Stranded	Yes
223ECRH081T5U	2.4 m	1.5 m	813 mm	#2 Solid	Yes
223ECRH102Q2U	3.1 m	0.6 m	813 mm	4/0 Stranded	Yes
223ECRH101T4UB	3.1 m	1.2 m	813 mm	#2 Solid	No
223ECRH101T4U	3.1 m	1.2 m	813 mm	#2 Solid	Yes
223ECRH101V4U	3.1 m	1.2 m	813 mm	#2 Stranded	Yes
223ECRH102C4U	3.1 m	1.2 m	813 mm	1/0 Stranded	Yes
223ECRH102G4U	3.1 m	1.2 m	813 mm	2/0 Stranded	Yes

Part Number	Electrode Length	Pigtail Length	Depth	Conductor Size	Kit
223ECRH102Q4UB	3.1 m	1.2 m	813 mm	4/0 Stranded	No
223ECRH102Q4U	3.1 m	1.2 m	813 mm	4/0 Stranded	Yes
223ECRH102V4UB	3.1 m	1.2 m	813 mm	250 kcmil Stranded	No
223ECRH102V4U	3.1 m	1.2 m	813 mm	250 kcmil Stranded	Yes
223ECRH103Q4U	3.1 m	1.2 m	813 mm	500 kcmil Stranded	Yes
223ECRH104L4U	3.1 m	1.2 m	813 mm	750 kcmil Stranded	Yes
223ECRH101T5U	3.1 m	1.5 m	813 mm	#2 Solid	Yes
223ECRH102Q6U	3.1 m	1.8 m	813 mm	4/0 Stranded	Yes
223ECRH101T10U	3.1 m	3.1 m	813 mm	#2 Solid	Yes
223ECRH101T15U	3.1 m	4.6 m	813 mm	#2 Solid	Yes
223ECRH101T20U	3.1 m	6.1 m	813 mm	#2 Solid	Yes
223ECRH121T4U	3.7 m	1.2 m	813 mm	#2 Solid	Yes
223ECRH122Q4U	3.7 m	1.2 m	813 mm	4/0 Stranded	Yes
223ECRH122V4U	3.7 m	1.2 m	813 mm	250 kcmil Stranded	Yes
223ECRH122Q5U	3.7 m	1.5 m	813 mm	4/0 Stranded	Yes
223ECRH121T6U	3.7 m	1.8 m	813 mm	#2 Solid	Yes
223ECRHE151G4U	4.6 m	1.2 m	813 mm	#6 Solid	Yes
223ECRHE152Q4U	4.6 m	1.2 m	813 mm	4/0 Stranded	Yes
223ECRHE201T4U	6.1 m	1.2 m	813 mm	#2 Solid	Yes
223ECRHE202G4U	6.1 m	1.2 m	813 mm	2/0 Stranded	Yes
223ECRHE202Q4U	6.1 m	1.2 m	813 mm	4/0 Stranded	Yes
223ECRHE201L5U	6.1 m	1.5 m	813 mm	#4 Stranded	Yes
223ECRHE202C20U	6.1 m	6.1 m	813 mm	1/0 Stranded	Yes
Installation: Vertical with Pigtail Down					
223ECRV082Q4DB	2.4 m	1.2 m		4/0 Stranded	No
223ECRV082Q4D	2.4 m	1.2 m		4/0 Stranded	Yes
223ECRV102Q2D	3.1 m	0.6 m		4/0 Stranded	Yes
223ECRV101L4D	3.1 m	1.2 m		#4 Stranded	Yes
223ECRV101T4DB	3.1 m	1.2 m		#2 Solid	No
223ECRV101T4D	3.1 m	1.2 m		#2 Solid	Yes
223ECRV101V4D	3.1 m	1.2 m		#2 Stranded	Yes
223ECRV102C4DB	3.1 m	1.2 m		1/0 Stranded	No
223ECRV102C4D	3.1 m	1.2 m		1/0 Stranded	Yes
223ECRV102G4D	3.1 m	1.2 m		2/0 Stranded	Yes
223ECRV102K4D	3.1 m	1.2 m		3/0 Solid	Yes
223ECRV102L4D	3.1 m	1.2 m		3/0 Stranded	Yes
223ECRE102Q4DB	3.1 m	1.2 m		4/0 Stranded	No
223ECRV102Q4DB	3.1 m	1.2 m		4/0 Stranded	No
223ECRE102Q4D	3.1 m	1.2 m		4/0 Stranded	Yes
223ECRV102Q4D	3.1 m	1.2 m		4/0 Stranded	Yes
223ECRV102V4D	3.1 m	1.2 m		250 kcmil Stranded	Yes
223ECRV103Q4D	3.1 m	1.2 m		500 kcmil Stranded	Yes
223ECRV101T6D	3.1 m	1.8 m		#2 Solid	Yes
223ECRV102C6D	3.1 m	1.8 m		1/0 Stranded	Yes
223ECRV101V10D	3.1 m	3.1 m		#2 Stranded	Yes
223ECRV103Q65D	3.1 m	19.8 m		500 kcmil Stranded	Yes
223ECRV122G4D	3.7 m	1.2 m		2/0 Stranded	Yes
223ECRV122L4D	3.7 m	1.2 m		3/0 Stranded	Yes
223ECRV122Q4D	3.7 m	1.2 m		4/0 Stranded	Yes
223ECRV122V4D	3.7 m	1.2 m		250 kcmil Stranded	Yes
223ECRV123Q4D	3.7 m	1.2 m		500 kcmil Stranded	Yes
223ECRE152Q4DB	4.6 m	1.2 m		4/0 Stranded	No
223ECRE202C4DB	6.1 m	1.2 m		1/0 Stranded	No
223ECRE202C4D	6.1 m	1.2 m		1/0 Stranded	Yes
223ECRE202G4D	6.1 m	1.2 m		2/0 Stranded	Yes
223ECRE202Q4DB	6.1 m	1.2 m		4/0 Stranded	No
223ECRE202Q4D	6.1 m	1.2 m		4/0 Stranded	Yes
223ECRE203Q4DB	6.1 m	1.2 m		500 kcmil Stranded	No
223ECRE201T6DB	6.1 m	1.8 m		#2 Solid	No
223ECRE202Q10D	6.1 m	3.1 m		4/0 Stranded	Yes
223ECRE203Q10D	6.1 m	3.1 m		500 kcmil Stranded	Yes
223ECRE202Q15D	6.1 m	4.6 m		4/0 Stranded	Yes
223ECRE302Q4DB	9.1 m	1.2 m		4/0 Stranded	No
223ECRE401T4D	12.2 m	1.2 m		#2 Solid	Yes

Part Number	Electrode Length	Pigtail Length	Depth	Conductor Size	Kit
223ECRE402G4D	12.2 m	1.2 m		2/0 Stranded	Yes
223ECRE402Q4DB	12.2 m	1.2 m		4/0 Stranded	No
223ECRE402Q4D	12.2 m	1.2 m		4/0 Stranded	Yes
Installation: Vertical with Pigtail Up					
223ECRV081T4U	2.4 m	1.2 m		#2 Solid	Yes
223ECRV081V4U	2.4 m	1.2 m		#2 Stranded	Yes
223ECRV082Q4UB	2.4 m	1.2 m		4/0 Stranded	No
223ECRV082Q4U	2.4 m	1.2 m		4/0 Stranded	Yes
223ECRV081T5U	2.4 m	1.5 m		#2 Solid	Yes
223ECRV081T6U	2.4 m	1.8 m		#2 Solid	Yes
223ECRV081T20U	2.4 m	6.1 m		#2 Solid	Yes
223ECRV101T2U	3.1 m	0.6 m		#2 Solid	Yes
223ECRV102Q3U	3.1 m	0.9 m		4/0 Stranded	Yes
223ECRV101T4U	3.1 m	1.2 m		#2 Solid	Yes
223ECRV101V4U	3.1 m	1.2 m		#2 Stranded	Yes
223ECRV102C4UB	3.1 m	1.2 m		1/0 Stranded	No
223ECRV102C4U	3.1 m	1.2 m		1/0 Stranded	Yes
223ECRV102G4UB	3.1 m	1.2 m		2/0 Stranded	No
223ECRV102G4U	3.1 m	1.2 m		2/0 Stranded	Yes
223ECRV102L4U	3.1 m	1.2 m		3/0 Stranded	Yes
223ECRV102Q4UB	3.1 m	1.2 m		4/0 Stranded	No
223ECRV102Q4U	3.1 m	1.2 m		4/0 Stranded	Yes
223ECRV102V4U	3.1 m	1.2 m		250 kcmil Stranded	Yes
223ECRV103Q4U	3.1 m	1.2 m		500 kcmil Stranded	Yes
223ECRV104L4U	3.1 m	1.2 m		750 kcmil Stranded	Yes
223ECRV101T5U	3.1 m	1.5 m		#2 Solid	Yes
223ECRV102Q5UB	3.1 m	1.5 m		4/0 Stranded	No
223ECRV102Q5U	3.1 m	1.5 m		4/0 Stranded	Yes
223ECRV101T6U	3.1 m	1.8 m		#2 Solid	Yes
223ECRV102G6U	3.1 m	1.8 m		2/0 Stranded	Yes
223ECRV102Q6U	3.1 m	1.8 m		4/0 Stranded	Yes
223ECRV102C8U	3.1 m	2.4 m		1/0 Stranded	Yes
223ECRV102C10U	3.1 m	3.1 m		1/0 Stranded	Yes
223ECRV102Q10UB	3.1 m	3.1 m		4/0 Stranded	No
223ECRV102Q10U	3.1 m	3.1 m		4/0 Stranded	Yes
223ECRV102C15U	3.1 m	4.6 m		1/0 Stranded	Yes
223ECRV101T16U	3.1 m	4.9 m		#2 Solid	Yes
223ECRV102Q20U	3.1 m	6.1 m		4/0 Stranded	Yes
223ECRV121T4UB	3.7 m	1.2 m		#2 Solid	No
223ECRV121T4U	3.7 m	1.2 m		#2 Solid	Yes
223ECRV122C4U	3.7 m	1.2 m		1/0 Stranded	Yes
223ECRV122Q4U	3.7 m	1.2 m		4/0 Stranded	Yes
223ECRV122V4U	3.7 m	1.2 m		250 kcmil Stranded	Yes
223ECRV123Q4U	3.7 m	1.2 m		500 kcmil Stranded	Yes
223ECRV122G6UB	3.7 m	1.8 m		2/0 Stranded	No
223ECRV122G10U	3.7 m	3.1 m		2/0 Stranded	Yes
223ECRV122Q10U	3.7 m	3.1 m		4/0 Stranded	Yes
223ECRE152Q4UB	4.6 m	1.2 m		4/0 Stranded	No
223ECRE152Q4U	4.6 m	1.2 m		4/0 Stranded	Yes
223ECRE153Q4U	4.6 m	1.2 m		500 kcmil Stranded	Yes
223ECRE152Q6U	4.6 m	1.8 m		4/0 Stranded	Yes
223ECRE152Q10UB	4.6 m	3.1 m		4/0 Stranded	No
223ECRE152Q10U	4.6 m	3.1 m		4/0 Stranded	Yes
223ECRE201T4UB	6.1 m	1.2 m		#2 Solid	No
223ECRE201T4U	6.1 m	1.2 m		#2 Solid	Yes
223ECRE201V4U	6.1 m	1.2 m		#2 Stranded	Yes
223ECRE202G4U	6.1 m	1.2 m		2/0 Stranded	Yes
223ECRE202Q4UB	6.1 m	1.2 m		4/0 Stranded	No
223ECRE202Q4U	6.1 m	1.2 m		4/0 Stranded	Yes
223ECRE203Q4U	6.1 m	1.2 m		500 kcmil Stranded	Yes
223ECRE202V5U	6.1 m	1.5 m		250 kcmil Stranded	Yes
223ECRE352L1UB	10.7 m	0.3 m		3/0 Stranded	No
223ECRE402Q4UB	12.2 m	1.2 m		4/0 Stranded	No
223ECRE402Q4U	12.2 m	1.2 m		4/0 Stranded	Yes

Chemical ground rods can be ordered as individual components or as a complete kit. Kits include the chemical electrode (pre-filled with electrolytic salts ), GEM, Bentonite, and a high-density polyethylene inspection well.

## GROUND ENHANCEMENT MATERIALS



Salt Mix



GEM



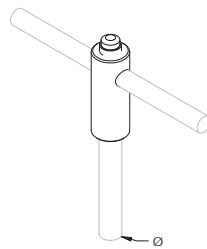
Quick Fill

### FEATURES

- Individual packages of salt mix are available for sale separately from the chemical ground rod assembly
- GEM Ground Enhancement Material (GEM) is a superior conductive material that solves your toughest grounding problems.
- Quick Fill is a no-mix ground-enhancing backfill that reduces resistance to ground and enables convenient installations.

Part Number	Unit Weight
223ECRCHM15LB	6.8 kg
223GEM25A	11.36
223QF25	11.36

## nVENT ERICO HAMMERLOCK GROUND CLAMP



### FEATURES

- Irreversible connection with excellent mechanical strength
- Fast and simple installation requires only a hammer
- No special training required
- Low resistance connection
- Provides a visual indication of completed connection
- Allows for "T" or pass-through connections

The nVent ERICO Hammerlock irreversible mechanical connection connects the grounding conductor to the ground rod. Machined from highly conductive copper, the state-of-the-art Hammerlock provides a low resistance connection designed to withstand ground fault currents and lightning transients. The connector's mechanically rugged design will help ensure that the highest level of performance is maintained for many years after the connection has been buried in the harsh underground environment.

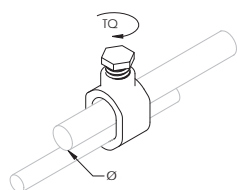
Material: Copper



Part Number	Article Number	Ground Rod Diameter, Nominal	Ground Rod Diameter, Actual	Conductor Size	Number of Conductors	Certifications
Ground Rod Type: Copper-bonded						
223EHL12FC1K	166958	1/2"	12.7 mm	#6 Solid - #4 Solid, 16 mm <sup>2</sup> Stranded	1	cULus
223EHL12FC1K1K	166959	1/2"	12.7 mm	#6 Solid - #4 Solid, 16 mm <sup>2</sup> Stranded	2	
223EHL12FC1V	166962	1/2"	12.7 mm	#4 Stranded - #2 Stranded, 25 mm <sup>2</sup> Stranded	1	cULus
223EHL12FC2G	166992	1/2"	12.7 mm	1/0 Stranded - 2/0 Stranded	1	cULus
223EHL58C1K	166973	5/8"	14.2 mm	#6 Solid - #4 Solid, 16 mm <sup>2</sup> Stranded	1	cULus
223EHL58C1K1K	166974	5/8"	14.2 mm	#6 Solid - #4 Solid, 16 mm <sup>2</sup> Stranded	2	
223EHL58C1V	166977	5/8"	14.2 mm	#4 Stranded - #2 Stranded, 25 mm <sup>2</sup> Stranded	1	cULus
223EHL58C2G	166978	5/8"	14.2 mm	1/0 Stranded - 2/0 Stranded	1	cULus
223EHL34C1K	166988	3/4"	17.3 mm	#6 Solid - #4 Solid, 16 mm <sup>2</sup> Stranded	1	cULus
223EHL34C1V	166991	3/4"	17.3 mm	#4 Stranded - #2 Stranded, 25 mm <sup>2</sup> Stranded	1	cULus
223EHL34C2G	166992	3/4"	17.3 mm	1/0 Stranded - 2/0 Stranded	1	cULus

Part Number	Article Number	Ground Rod Diameter, Nominal	Ground Rod Diameter, Actual	Conductor Size	Number of Conductors	Certifications
Ground Rod Type: Galvanized						
223EHL58G1K		5/8"	16.0 mm	#6 Solid - #4 Solid, 16 mm <sup>2</sup> Stranded	1	cULus
223EHL58G1K1K	166974	5/8"	16.0 mm	#6 Solid - #4 Solid, 16 mm <sup>2</sup> Stranded	2	
223EHL58G1V	166977	5/8"	16.0 mm	#4 Stranded - #2 Stranded, 25 mm <sup>2</sup> Stranded	1	cULus
223EHL58G2G	166978	5/8"	16.0 mm	1/0 Stranded - 2/0 Stranded	1	cULus
223EHL34G1K		3/4"	18.5 mm	#6 Solid - #4 Solid, 16 mm <sup>2</sup> Stranded	1	cULus
223EHL34G1V		3/4"	18.5 mm	#4 Stranded - #2 Stranded, 25 mm <sup>2</sup> Stranded	1	cULus

### GROUND ROD CLAMP, ROD TO CONDUCTOR, BRONZE



#### FEATURES

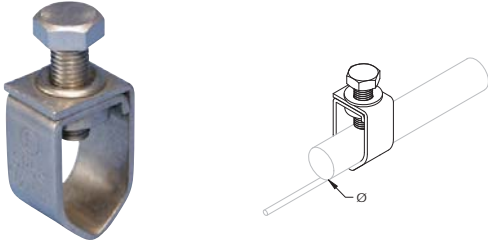
- For use with copper-bonded ground rods
- Parts that are UL Listed are suitable for direct burial in earth or concrete



Part Number	Article Number	Ground Rod Diameter, Nominal	Ground Rod Diameter, Actual	Conductor Size	Wrench Size	Certifications
Torque: 16.9 to 33.9 N-m — Material: Silicon Bronze						
223CP38	158155	3/8"	9.7 mm	#10 Solid - #2 Stranded, 6 mm <sup>2</sup> Solid - 25 mm <sup>2</sup> Stranded	3/8"	cULus
223CP58	158165	1/2" - 5/8"	12.5 - 14.2 mm	#10 Solid - #2 Stranded, 6 mm <sup>2</sup> Solid - 25 mm <sup>2</sup> Stranded	1/2"	CSA, cULus
223CP34	158175	1/2" - 3/4"	12.5 - 17.3 mm	#10 Solid - 1/0 Stranded, 6 mm <sup>2</sup> Solid - 50 mm <sup>2</sup> Stranded	1/2"	CSA, cULus
Torque: 16.9 to 50.8 N-m — Material: Silicon Bronze						
223HDC12		1/2"	12.5 mm	#10 Solid - #2 Stranded, 6 mm <sup>2</sup> Solid - 25 mm <sup>2</sup> Stranded	1/2"	CSA, cULus
223HDC58R		5/8"	14.2 mm	#8 Solid - 1/0 Stranded, 10 mm <sup>2</sup> Solid - 50 mm <sup>2</sup> Stranded	1/2"	CSA, cULus
223HDC58		5/8"	14.2 mm	#8 Solid - 1/0 Stranded, 10 mm <sup>2</sup> Solid - 50 mm <sup>2</sup> Stranded	9/16"	CSA, cULus
223HDC34		3/4"	17.3 mm	#8 Solid - 1/0 Stranded, 10 mm <sup>2</sup> Solid - 50 mm <sup>2</sup> Stranded	9/16"	CSA, cULus
223HDC34SP		3/4"	17.3 mm	#8 Solid - 3/0 Stranded, 10 mm <sup>2</sup> Solid - 70 mm <sup>2</sup> Stranded	9/16"	CSA
223HDC1	158250	1"	25.4 mm	#8 Solid - 4/0 Stranded, 10 mm <sup>2</sup> Solid - 95 mm <sup>2</sup> Stranded	9/16"	cULus
Torque: 25.0 N-m Max — Material: Gunmetal						
223C12	158260	1/2" - 1/2"	12.5 - 12.7 mm	50 mm <sup>2</sup> Stranded Max	14 mm	
223C58	158160	1/2" - 5/8"	12.5 - 15.0 mm	70 mm <sup>2</sup> Stranded Max	14 mm	
Torque: 33.9 N-m Max — Material: Gunmetal						
223C34	158170	5/8" - 3/4"	14.2 - 17.2 mm	70 mm <sup>2</sup> Stranded Max	14 mm	
223C19	156900	5/8" - 3/4"	14.2 - 19.0 mm	70 mm <sup>2</sup> Stranded Max	14 mm	
223C200	156910	5/8" - 3/4"	14.2 - 20.0 mm	70 mm <sup>2</sup> Stranded Max	24 mm	



## GROUND ROD CLAMP, ROD TO CONDUCTOR, STAINLESS STEEL



### FEATURES

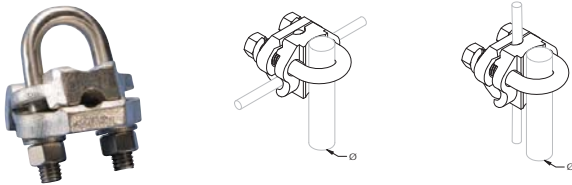
- Unique stamped body design will not crack from excessive torque
- Provides a greater surface area contact to allow improved performance of the connector
- Compatible with copper, copper bonded, galvanized, stainless steel, rebar and plain steel ground rods and electrodes

Material: Bronze, Stainless Steel 304 (EN 1.4301 )  
 Finish: Tinned



Part Number	Article Number	Ground Rod Diameter, Nominal	Ground Rod Diameter, Actual	Conductor Size	Wrench Size
223SP58	158185	1/2" - 5/8"	12.7 - 15.9 mm	#12 Stranded - #2 Stranded, 4 mm <sup>2</sup> Stranded - 25 mm <sup>2</sup> Stranded	1/2"
223SP58B916		1/2" - 5/8"	12.7 - 15.9 mm	#12 Stranded - #2 Stranded, 4 mm <sup>2</sup> Stranded - 25 mm <sup>2</sup> Stranded	9/16"

## GROUND ROD CLAMP, U-BOLT, TINNED, ONE CONDUCTOR



### FEATURES

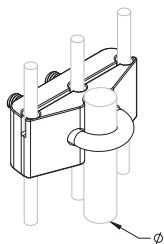
- Tinned finish to reduce galvanic corrosion
- Tinned finish provides a theft-deterrent appearance
- Accepts conductors in both parallel and perpendicular orientations

Material: Bronze, Stainless Steel 304 (EN 1.4301 )  
 Finish: Tinned



Part Number	Ground Rod Diameter, Nominal	Conductor Size, UL
223GC064	5/8" - 3/4"	#4 Sol - 2/0 Str, 16 mm <sup>2</sup> Str - 50 mm <sup>2</sup> Str
223GC065	5/8" - 3/4"	2/0 Sol - 250 kcmil Str, 70 mm <sup>2</sup> Str - 120 mm <sup>2</sup> Str

## GROUND ROD CLAMP, U-BOLT, THREE CONDUCTORS



### FEATURES

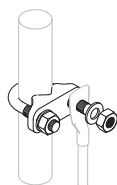
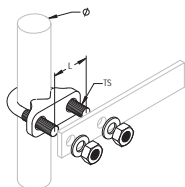
- Ground rod clamp that allows up to three separate conductors to be connected to a ground rod
- Bronze material is a copper alloy with high copper content
- Tinned bronze has theft-deterrent appearance

Material: Bronze

Finish: Tinned

Part Number	Ground Rod Diameter, Nominal	Ground Rod Diameter, Actual	Conductor Size
GC065TH	5/8" – 3/4"	15.9 – 19.1 mm	2/0 Solid - 250 kcmil Stranded, 70 mm <sup>2</sup> Stranded - 120 mm <sup>2</sup> Stranded

## GROUND ROD CLAMP, U-BOLT, TYPE E



### FEATURES

- Designed to accommodate tape or bar in either a horizontal or vertical position
- Can also be used with a lug connection from a round conductor
- Can be used to connect to ground rods or rebar

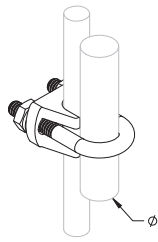
Material: Gunmetal, Brass

Part Number	Article Number	Ground Rod Diameter, Nominal	Ground Rod Diameter, Actual	Rebar Size, Metric	Rebar Size, US	Rebar Size, Canada	Length	Thread Size
223UB16	710370	5/8"	14.2 mm	12 mm	#4	10M	38 mm	M10
223UB20	710380	3/4"	17.3 mm	16 mm	#5	15M	38 mm	M10
223UB25	710390	1"	25.0 mm	25 mm	#8	25M	38 mm	M10

### Conductor Orientation (Parallel or Perpendicular)

223GC064	Conductor Size (Stranded)
Nominal Ground Rod Diameter	16mm <sup>2</sup> 25mm <sup>2</sup> 35mm <sup>2</sup> 50mm <sup>2</sup> 70mm <sup>2</sup>
5/8" copperbonded ground rod	Par.      Par.      Par.      Perp.      Perp.
5/8" galvanized/stainless steel ground rod	Par.      Par.      -      Perp.      Perp.
3/4" copperbonded ground rod	Par.      -      -      Perp.      Perp.
3/4" galvanized/stainless steel ground rod	-      -      -      Perp.      -
223GC064	Conductor Size (Stranded)
Nominal Ground Rod Diameter	16mm <sup>2</sup> 25mm <sup>2</sup> -70mm <sup>2</sup> 95mm <sup>2</sup> 120mm <sup>2</sup>
5/8" copperbonded ground rod	Par.      Both      Both      Par.
5/8" galvanized/stainless steel ground rod	Par.      Both      Both      Par.
3/4" copperbonded ground rod	Par.      Both      Both      -
3/4" galvanized/stainless steel ground rod	Par.      Both      -      -

## GROUND ROD CLAMP, U-BOLT SADDLE, ONE CONDUCTOR



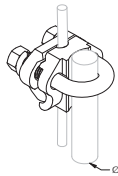
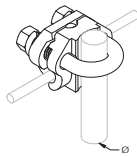
### FEATURES

- Clamp that allows a conductor to be connected to a ground rod

Material: Copper Alloy

Part Number	Ground Rod Diameter, Nominal	Ground Rod Diameter, Actual	Conductor Size
223REP16120L	3/4"	17.3 mm	#4 Solid - 4/0 Stranded, 16 mm <sup>2</sup> Stranded - 120 mm <sup>2</sup> Stranded

## GROUND ROD CLAMP, U-BOLT, BARE, ONE CONDUCTOR

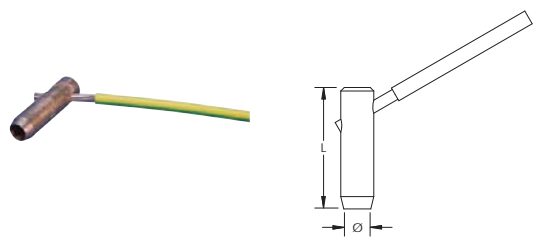


### FEATURES

- Accepts conductors in both parallel and perpendicular orientations
- For use with copper-bonded ground rods

Part Number	Article Number	Ground Rod Diameter, Nominal	Ground Rod Diameter, Actual	Conductor Size
Material: Copper, Bronze, Brass				
223GUV16070	710400	5/8" – 1"	14.2 – 23.2 mm	#4 Solid - 2/0 Stranded, 16 mm <sup>2</sup> Stranded - 70 mm <sup>2</sup> Stranded
223GUV70185	710410	5/8" – 1"	14.2 – 23.2 mm	#4 Solid - 300 kcmil Stranded, 16 mm <sup>2</sup> Stranded - 185 mm <sup>2</sup> Stranded
Material: Steel, Bronze — Finish: Hot-Dip Galvanized				
223REC1450	415100	5/8"	14.2 mm	#6 Solid - #2 Stranded, 16 mm <sup>2</sup> Stranded - 50 mm <sup>2</sup> Stranded

## GROUND ROD CLAMP WITH PREFABRICATED PIGTAIL



### FEATURES

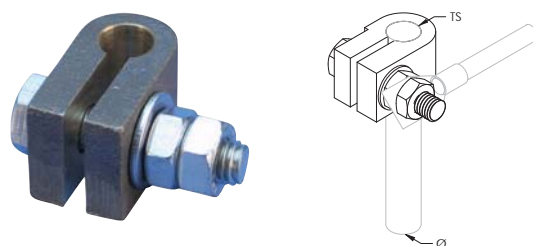
- Prefabricated assembly including grounding clamp with pigtail
- Fast and simple installation requires only a hammer

Material: Copper

Insulation: Green and Yellow Insulated Cable

Part Number	Article Number	Ground Rod Diameter, Nominal	Length	Pigtail Length	Conductor Size	Unit Weight
223EPT1225300	158610	1/2"	70 mm	300 mm	25 mm <sup>2</sup> Stranded	0.5 kg
223EPT1425350	158675	5/8"	75 mm	350 mm	25 mm <sup>2</sup> Stranded	0.5 kg
223EPT1450350	158290	5/8"	75 mm	350 mm	50 mm <sup>2</sup> Stranded	0.5 kg

## GROUND ROD SPLIT CLAMP, ROD TO TAPE



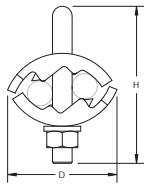
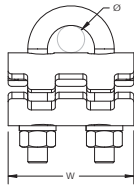
### FEATURES

- Used to connect a ground rod to a lug or to tape with a punched hole

Material: Gunmetal

Part Number	Article Number	Ground Rod Diameter, Actual	Thread Size
223RCC10	710420	9.2 mm Max	M8
223RCC16	710430	14.2 mm Max	M10
223SRC15	710440	14.8 mm Max	M10
223SRC20	710450	19.0 mm Max	M12

## U-BOLT GROUND ROD CLAMP



### FEATURES

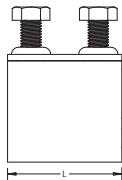
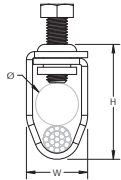
- Connects conductors to ground rods
- Listed to UL<sup>®</sup> 96

Material: Brass



Part Number	Conductor Size, UL	Ground Rod Diameter, Nominal	Ground Rod Diameter, Actual	Depth	Height	Width	Unit Weight
223LPC795	Class 1 - Class 2 (4/0 Max )	1/2" - 3/4"	12.8 - 17.3 mm	42.2 mm	63.5 mm	50.8 mm	0.11 kg

## GROUND ROD CLAMP



### FEATURES

- Unique stamped body design will not crack as mechanical forces are increased
- Stainless steel threads will not strip if over-tightened
- Unique internal profile offers pull-out load in excess of four times the UL<sup>®</sup> 96 requirement
- Listed to UL<sup>®</sup> 96

Material: Copper



Part Number	Conductor Size, UL	Ground Rod Diameter, Nominal	Ground Rod Diameter, Actual	Height	Length	Width	Unit Weight
223LPC790	Class 1 - Class 2 (4/0 Max )	1/2" - 3/4"	12.7 - 17.3 mm	42 mm	44.5 mm	23.8 mm	0.152 kg

Available From:

Noremak Industries Pty Ltd  
1 Ledger Road Beverley SA 5009  
PH 08 8244 7288 Fax 08 8244 7299 [sales@noremak.com.au](mailto:sales@noremak.com.au)  
[www.noremak.com.au](http://www.noremak.com.au)

Our powerful portfolio of brands:

CADDY ERICO HOFFMAN RAYCHEM SCHROFF TRACER



©2018 nVent. All nVent marks and logos are owned or licensed by nVent Services GmbH or its affiliates. All other trademarks are the property of their respective owners. nVent reserves the right to change specifications without notice.

ERICO-CAT-E1290B-E127LT17WWEN-EN-1805