

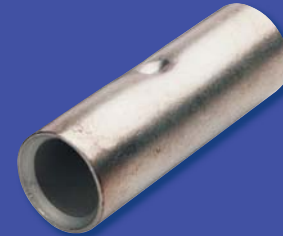
BELL MOUTH LUGS

Part Number	Conductor size (mm ²)	Stranding metric	Stud (mm)	ID size (mm)	Palm width (mm)	Barrel length (mm)	Full length (mm)	A/F hex (mm)	Pack qty
CL10-6BM	10	80 x 0.41	M6	4.7	12	10	27	5.7	25
CL10-8BM			M8		14		29		
CL10-10BM			M10		15		32		
CL10-12BM			M12		18		38		
CL16-6BM	16	128 x 0.41	M6	5.5	11	19	39	6.3	25
CL16-8BM			M8		14		41		
CL16-10BM			M10		16		46		
CL16-12BM			M12		18		46		
CL25-6BM	25	200 x 0.41	M6	7.1	13.5	21	41	7.7	25
CL25-8BM			M8		16		44		
CL25-10BM			M10		16		48		
CL25-12BM			M12		18		48		
CL35-6BM	35	280 x 0.41	M6	8.4	16	21	45	9.2	25
CL35-8BM			M8		18		51		
CL35-10BM			M10		20		51		
CL35-12BM			M12		22		51		
CL50-6BM	50	400 x 0.41	M6	9.5	18	22	46	10.4	10
CL50-8BM			M8		21		54		
CL50-10BM			M10		21		54		
CL50-12BM			M12		21		54		
CL70-6BM	70	356 x 0.51	M6	11.3	21	24	54	11.5	10
CL70-8BM			M8		24		54		
CL70-10BM			M10		24		54		
CL70-12BM			M12		24		54		
CL95-8BM	95	485 x 0.51	M8	13.5	25	27	60	14.2	10
CL95-10BM			M10				60		
CL95-12BM			M12				60		
CL120-10BM	120	614 x 0.51	M10	15.6	30	30	64	16.5	1
CL120-12BM			M12				64		
CL150-10BM	150	765 x 0.51	M10	16.7	32	30	71	18.3	1
CL150-12BM			M12				75		
CL185-10BM	185	944 x 0.51	M10	18.4	36	32	74	20	1
CL185-12BM			M12				79		
CL240-10BM	240	1225 x 0.51	M10	21.2	41	38	92	23.1	1
CL240-12BM			M12				92		

CIRCUIT BREAKER BELL MOUTH LUGS NARROW PALM

Part Number	Conductor size (mm ²)	Stranding metric	Stud (mm)	ID size (mm)	Palm width (mm)	Barrel length (mm)	Full length (mm)	A/F hex (mm)	Pack qty
CLB35-6NP	35	280 x 0.41	M6	8.4	16	21	45	9.2	25
CLB50-6NP	50	400 x 0.41	M6	9.5	18	22	46	10.4	10
CLB50-10NP			M10						
CLB70-6NP	70	356 x 0.51	M6	11.3	21	24	54	11.5	10
CLB70-10NP			M10						
CLB95-8NP	95	485 x 0.51	M8	13.5	25	27	60	14.2	10
CLB95-10NP			M10						
CLB120-8NP	120	614 x 0.51	M8	15.6	30	30	64	16.5	1
CLB120-10NP			M10						
CLB150-10NP	150	765 x 0.51	M10	16.7	32	30	71	18.3	1
CLB185-10NP	185	944 x 0.51	M10	18.4	36	32	74	20	1
CLB240-10NP	240	1225 x 0.51	M10	21.2	41	38	92	23.1	1
CLB240-12NP			M12						
CLB300-10NP	300	1530 x 0.51	M10	23.8	46	42	101	26	1
CLB400-12NP	400	2035 x 0.51	M12	26.8	50	44	114	28.1	1
CLB500-12NP	500	1768 x 0.60	M12	30	56	50	119	31	1

*Note: Cable dimensions for fine stranded flexible cable is Class 5, please note cable sizes may vary by cable manufacturers' if in doubt contact your cable supplier.



COPPER LUG SERIES

Innovative product solutions need a solid basis

Noremak Industries is one of the leading suppliers of products for terminating, fastening, fixing, identifying and protecting cables and their connecting components. We also develop pioneering systems in the field of electrical and data networking technology for our customers. Our company philosophy is not only geared towards achieving unique products, but offering equally unique supply solutions, embracing the latest supply chain techniques.

Main principals that characterise our design competence

What does it take to deliver an innovative product solution? Simply, it consists of an idea that leads to products with an added value that is completely new for you. What this highlights clearly is in fact a complex undertaking in where many factors must interact with each other. This is why Noremak use three working methods to guarantee that development, quality, production and distribution of technically demanding solutions are guaranteed at the highest level.

Customer specific product development

The most important requirement of all for developing made-to-measure products is established through direct dialogue with our customers. It is on the basis that we develop innovative solutions which meet your high requirement profile. Our Engineers work closely together in a worldwide network. This is how they can achieve not only optimal synergies, but also a service and support quality which you will find nowhere else.

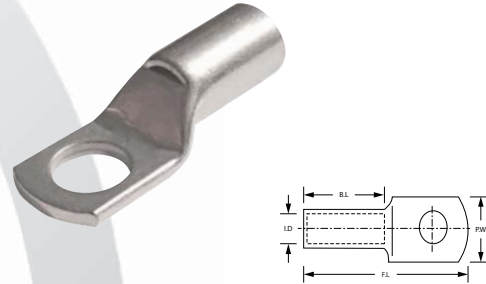
Development of market-leading all-purpose products

Noremak not only invest continuously in research and development, but also closely scrutinize our entire product portfolio. Intensive market and competition analysis enables us to spot market and processing trends ahead of time. This is why our products always meet your high expectations and special requirements.

Re-engineering of existing products

By re-engineering our products, we meet the constant optimisation of our wide ranging portfolio. The close co-operation with you, the dealers and end-users of our products allows us to continually adjust our existing products to up date market trends.

This constant development and modernisation of our products and processes makes us reliable partners. Noremak welcomes you to our range of Copper termination connectors to suit copper conductors. Our range of Copper Lugs/Links complies to Australian & New Zealand standard AS/NZS4325 Part 1:1995 as well as International Standards.



Technical data	Specification of Copper Grade C11000
Conductive material	Copper 99.99.25% pure Oxygen content 30 p.p.m Max. Tensile strength 205 Mpa Min Ductile rating 40% Final metal state fully annealed Electroplating material tin 99.9% pure Other metals lead + antimony Thickness 5 - 10 microns
Conformant standards	AS/NZS4325 Part 1:1995
General electrical properties	Total conductivity 99.99.25% IACS Total resistivity: 1.72 micro-ohm cm
Operating temperature	-55°C to 155°C due to oxygen-free copper

COPPER CRIMP LINKS

Part number	Conductor size (mm ²)	Stranding metric	ID size (mm)	Full length (mm)	A/F hex (mm)	Pack qty
CCL105	1.5	1/0.80	1.8	22		100
CCL205	2.5	7/0.67	2.4	22		100
CCL040	4	7/0.85	3.1	22		50
CCL060	6	7/1.04	3.8	22	4.4	50
CCL010	10	7/1.35	4.7	22	5.7	50
CCL016	16	7/1.70	5.5	44	6.3	50
CCL025	25	19/1.35	7.1	47	7.7	50
CCL035	35	19/1.53	8.4	47	9.2	25
CCL050	50	19/1.78	9.5	47	10.4	25
CCL070	70	19/2.14	11.2	50	11.5	20
CCL095	95	37/1.78	13.4	54	14.2	20
CCL120	120	37/2.03	15.6	60	16.5	20
CCL150	150	37/2.25	16.7	65	18.3	20
CCL185	185	37/2.52	18.4	65	20	20
CCL240	240	61/2.25	21.2	91	23.1	10
CCL300	300	61/2.52	23.8	90	26	1

COPPER LUGS

Part number	Conductor size (mm ²)	Stranding metric	Stud (mm)	ID size (mm)	Palm width (mm)	Barrel length (mm)	Full length (mm)	A/F hex (mm)	Pack qty
CL2.5-5	2.5	7/0.67	M5	2.4	10	8	21		100
CL2.5-6			M6						
CL2.5-8			M8						
CL04-5	4	7/0.85	M5	3.1	10	9	22		50
CL04-6			M6						
CL04-8			M8						
CL06-5	6	7/1.04	M5	3.8	12	10	23	4.4	50
CL06-6			M6						
CL06-8			M8						
CL06-10			M10						
CL10-6	10	7/1.35	M6	4.7	12	10	27	5.7	25
CL10-8			M8						
CL10-10			M10						
CL10-12			M12						
CL16-6	16	7/1.70	M6	5.5	11	19	39	6.3	25
CL16-8			M8						
CL16-10			M10						
CL16-12			M12						
CL25-6	25	19/1.35	M6	7.1	13.5	21	41	7.7	25
CL25-8			M8						
CL25-10			M10						
CL25-12			M12						
CL35-6	35	19/1.53	M6	8.4	16	21	45	9.2	25
CL35-8			M8						
CL35-10			M10						
CL35-12			M12						
CL50-6	50	19/1.78	M6	9.5	18	22	46	10.4	10
CL50-8			M8						
CL50-10			M10						
CL50-12			M12						
CL70-6	70	19/2.14	M6	11.3	21	24	54	11.5	10
CL70-8			M8						
CL70-10			M10						
CL70-12			M12						
CL95-8	95	37/1.78	M8	13.5	25	27	60	14.2	10
CL95-10			M10						
CL95-12			M12						
CL95-16			M16						
CL120-8	120	37/2.03	M8	15.6	30	30	64	16.5	10
CL120-10			M10						
CL120-12			M12						
CL120-16			M16						
CL150-10	150	37/2.25	M10	16.7	32	30	71	18.3	1
CL150-12			M12						
CL150-16			M16						
CL185-10	185	37/2.52	M10	18.4	36	32	74	20	1
CL185-12			M12						
CL185-16			M16						
CL240-10	240	61/2.25	M10	21.2	41	38	92	23.1	1
CL240-12			M12						
CL240-16			M16						
CL300-10	300	61/2.52	M10	23.8	46	42	101	26	1
CL300-12			M12						
CL400-12	400	61/2.85	M12	26.8	50	44	114	28.1	1
CL500-12	500	61/3.20	M12	30	56	50	119	31	1
CL630-12	630	127/2.52	M12	34	64.4	58	139	37	1